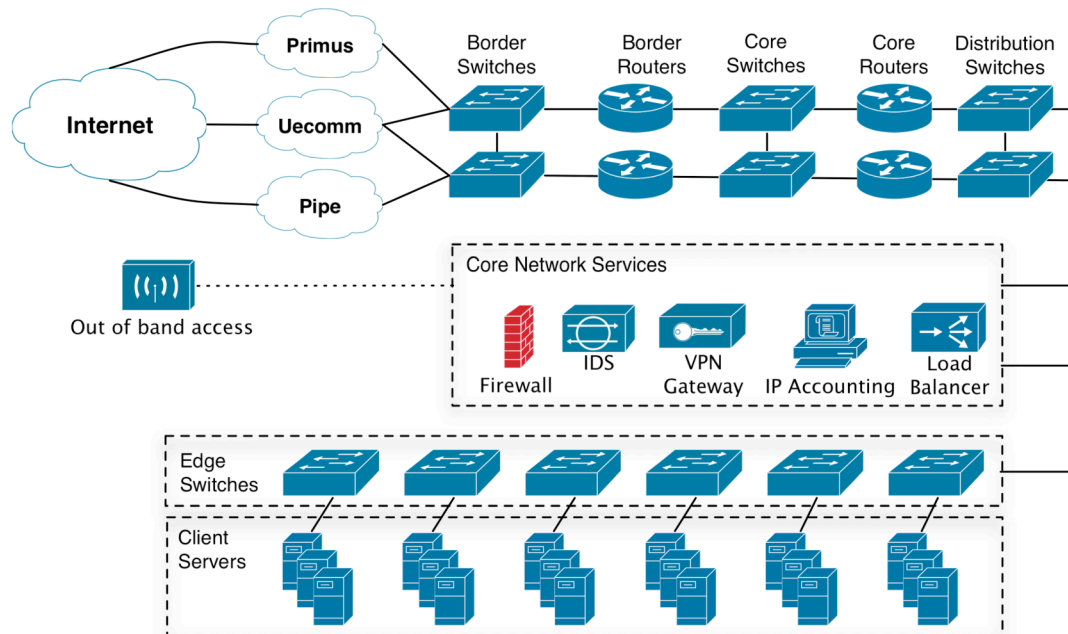


THE ANCHOR NETWORK



UPSTREAM PROVIDERS

Anchor uses three upstream providers for Internet connectivity consisting of Uecomm, Primus and Pipe Networks.

Connection handoffs are provided via independent carriers with each connection having a minimum of 100 Mbps capacity.

Anchor operates on its own IP address space and AS number providing full control over the choice of carrier and routing preferences.

UPSTREAM REDUNDANCY

Our multi-homed network consists of 3 independent connections, routing makes use of BGP to ensure automatic failover in the event of link failure with a given provider.

All links are maintained with sufficient capacity to ensure the network remains free of congestion resulting from either outages with any carrier or higher than expected short term peak loads.

Out of band connections are in place to provide remote management access in the case of core network service degradation.

NETWORK STRUCTURE

A fully redundant network design has been adopted allowing us to eliminate a single point of failure all the way through the network to each server.

Routing infrastructure consists of redundant border routers and switches coupled with redundant core routers and switches. Edge switches located in each rack utilise redundant hand offs from the core switches.

MONITORING SYSTEMS

The latency and network traffic throughput on all links is constantly monitored to ensure quality of service is not affected independently of availability.

Monitoring systems detect any deviation from acceptable levels automatically and alert technical staff.

DATA ACCOUNTING

All traffic flowing through the Anchor network is tracked on a per IP address basis. Measurement occurs in a passive fashion at the border of the network ignoring all localised data transfer. Inbound and outbound data are tracked independently.